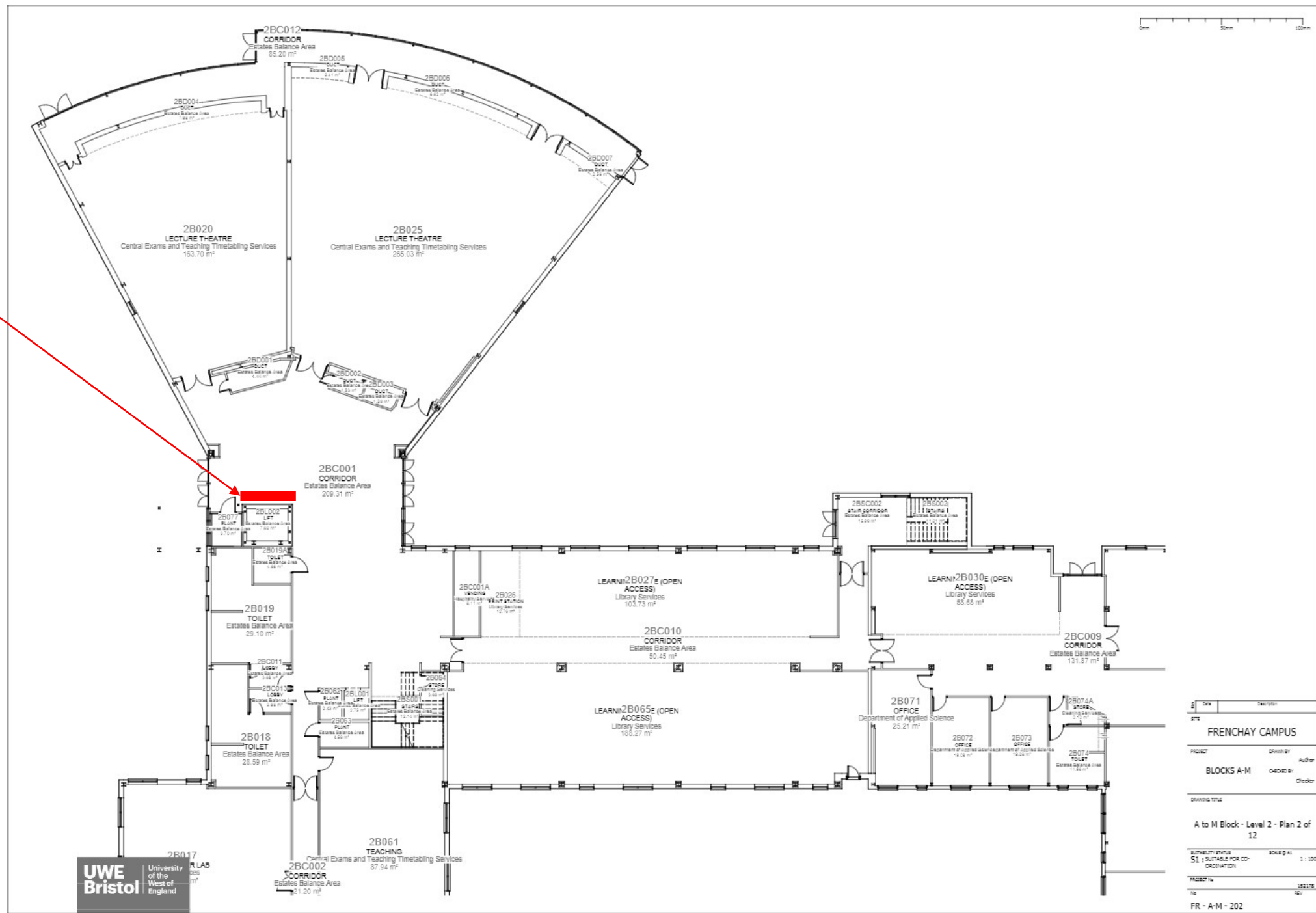
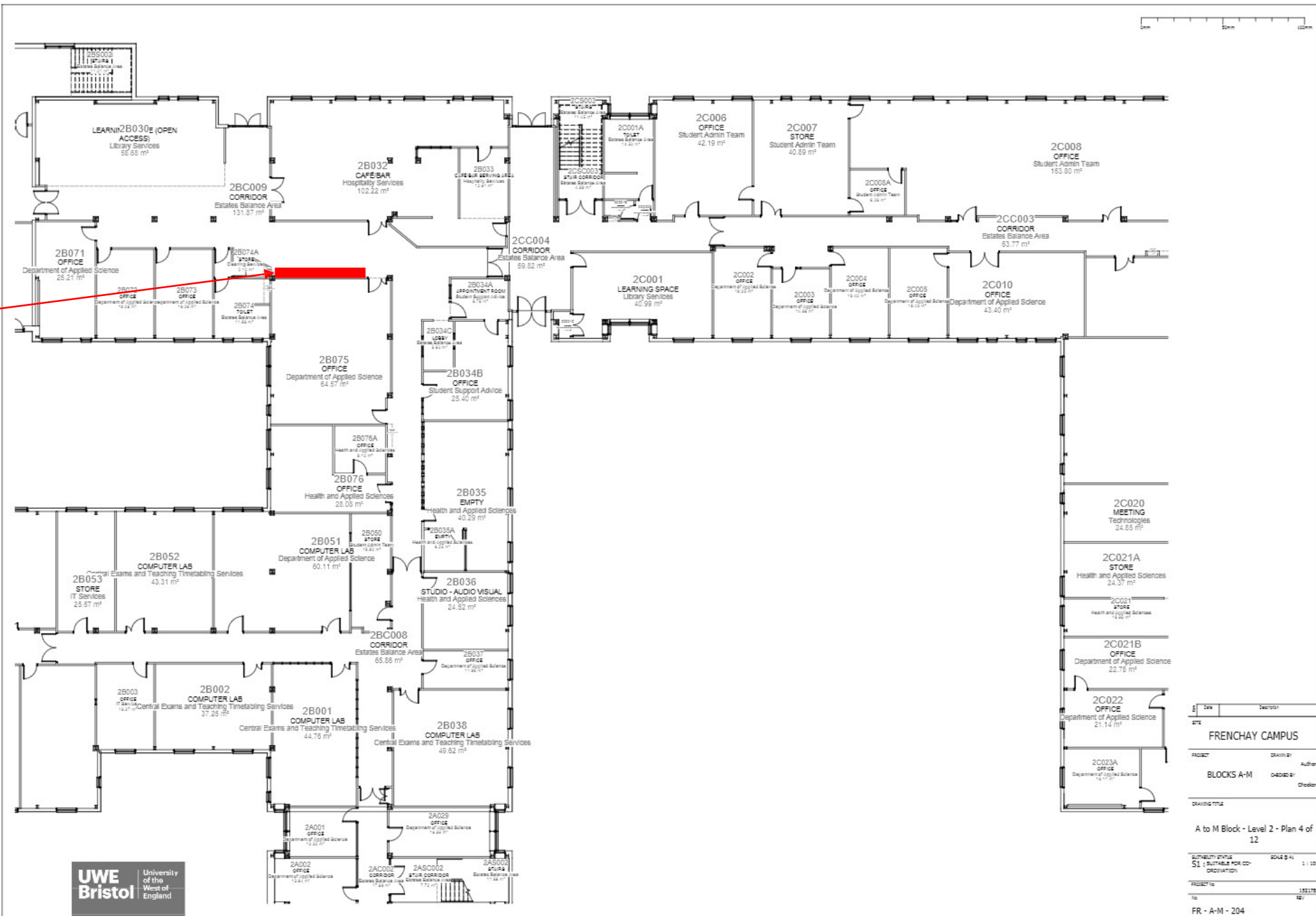


A photograph of a modern glass-enclosed elevator shaft. The shaft is made of clear glass panels held together by metal frames. A green emergency exit sign is visible on the glass door. The shaft is located in a building with a grey carpeted floor and a white wall.

The glass wall around the lift
opposite 2B020 and 2B025



Wall facing the chicken shack



A long, brightly lit hallway with a white wall on the right, a radiator, and a paper towel dispenser. The floor is polished and reflects the overhead lights.

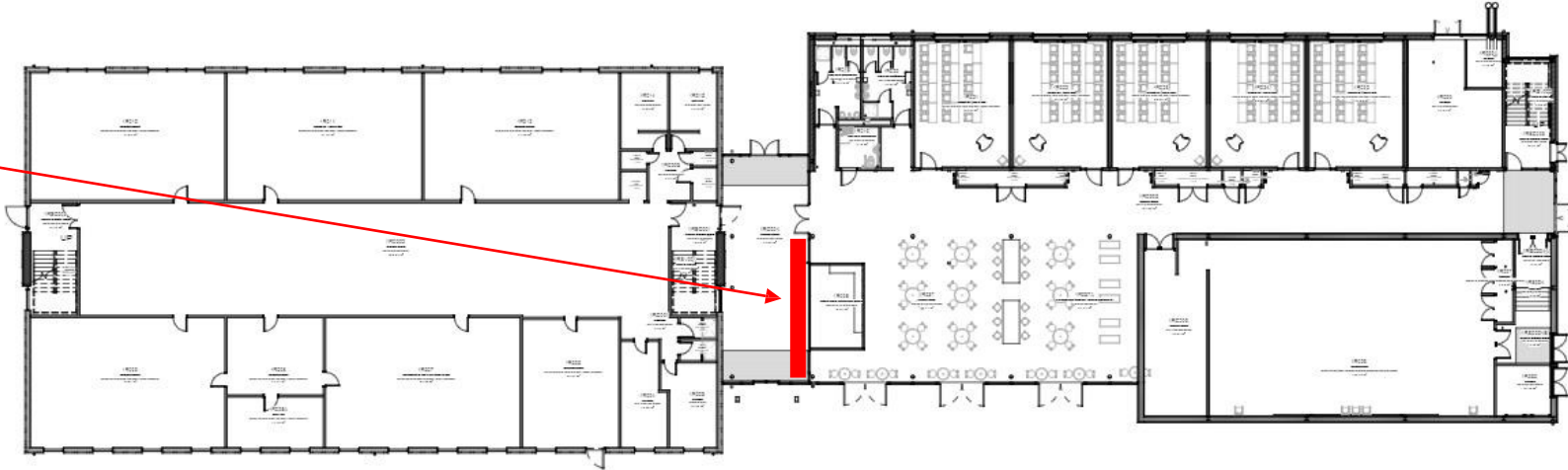
A photograph of a hallway with three recycling bins (black, red, and blue) against a white wall. A radiator is visible on the wall to the right, and a doorway is at the end of the hallway.

[illegible]

Frenchay
R Block
Level 1



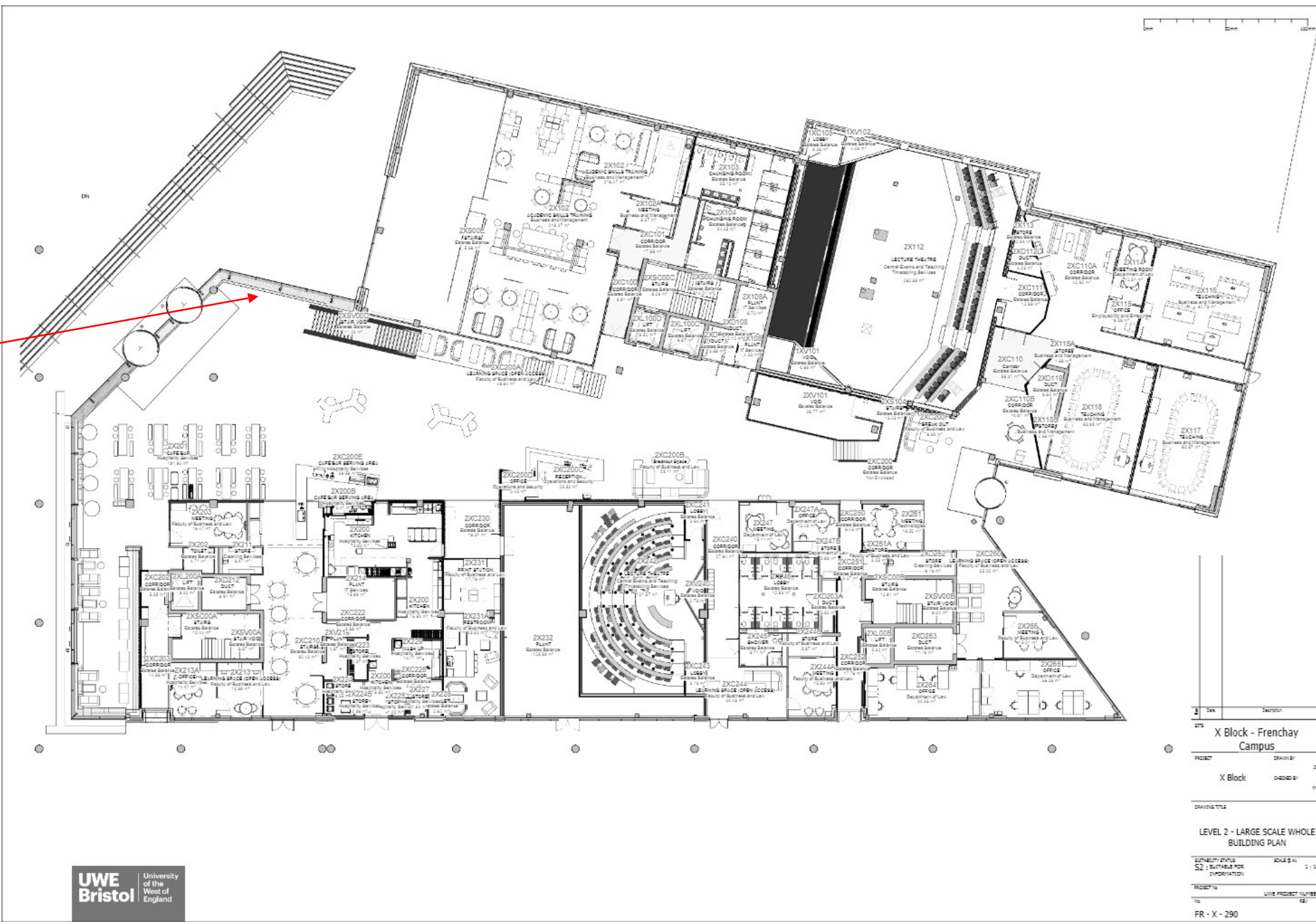
Wooden panel wall behind
Costa



Frenchay
X Block
Ground Floor



A number of pinboards will be positioned at the entrance of X Block



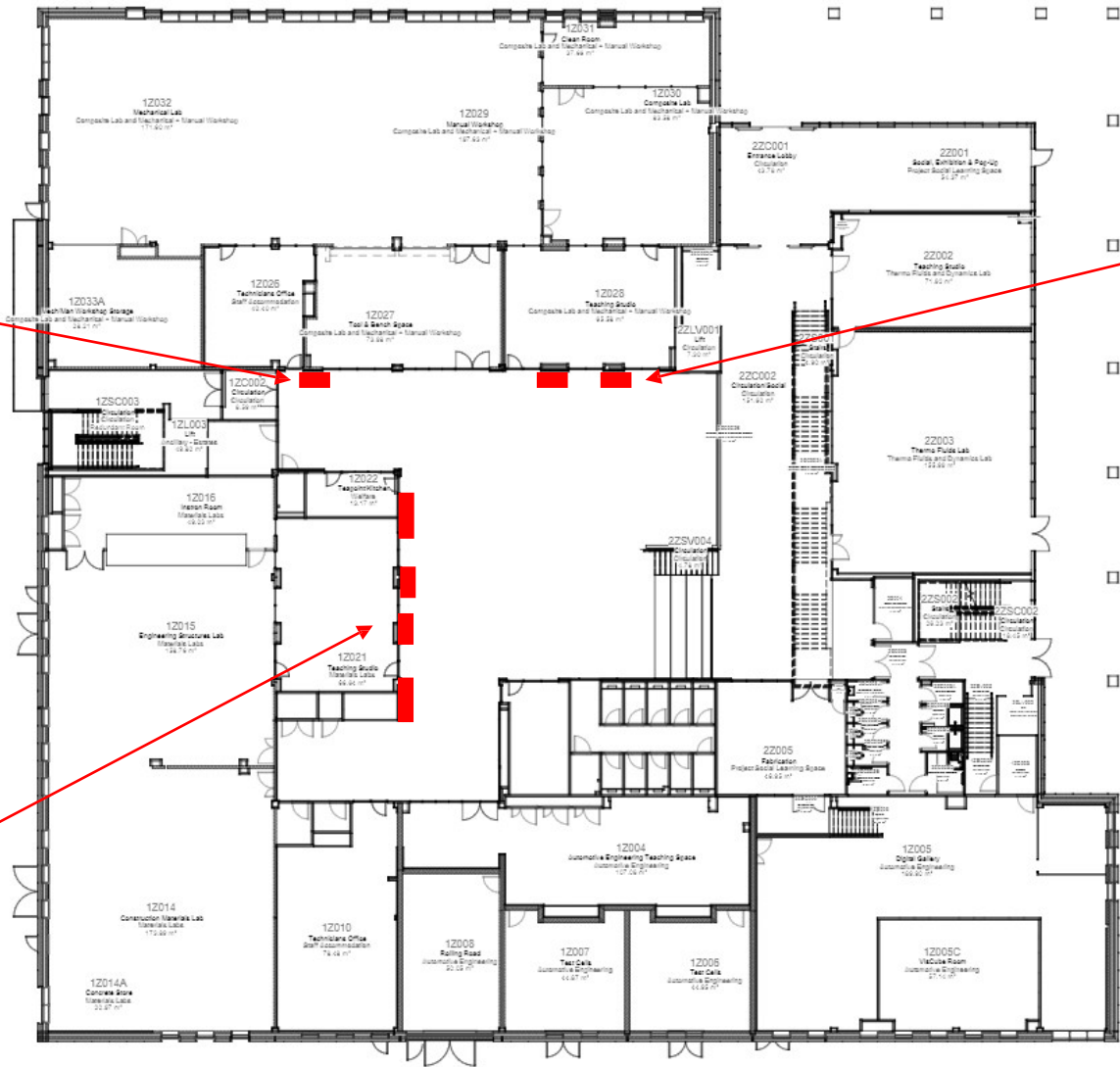
Frenchay
Z Block
Ground Floor



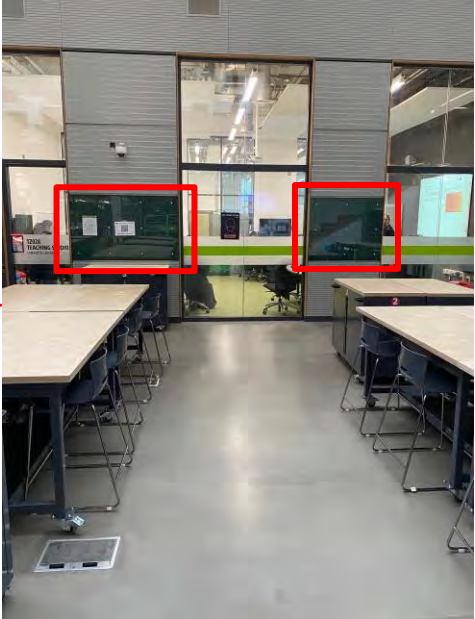
Place directly on the Perspex
screens of the green notice
boards



Place directly on the Perspex
screens of the green notice
boards



WARNING: THIS
BUILDING IS STILL
UNDER
CONSTRUCTION,
THE LAYOUT AND
SPACE
INFORMATION
SHOWN IS
INDICATIVE ONLY



Place directly on the Perspex
screens of the green notice
boards

Revision	
1	Issue
FRENCHAY CAMPUS - Z BLOCK (ENGINEERING)	
PROJECT	MASTER
DRAWN BY	AUTHOR
CHECKED BY	CHECKER
DRAWING TITLE	
LEVEL 2 - LARGE SCALE WHOLE BUILDING PLAN	
GRAPHIC STATUS	SCALE
S1 - SUITABLE FOR CO-ORDINATION	1 : 100
PROJECT NO.	SAMPLE PROJECT
FR - Z - 290	801

C:\Users\matt\Documents\FR-Z-290-01-01.dwg